

Population health, local government and the role of research

Alex Macmillan
School of Population Health



**THE UNIVERSITY
OF AUCKLAND**

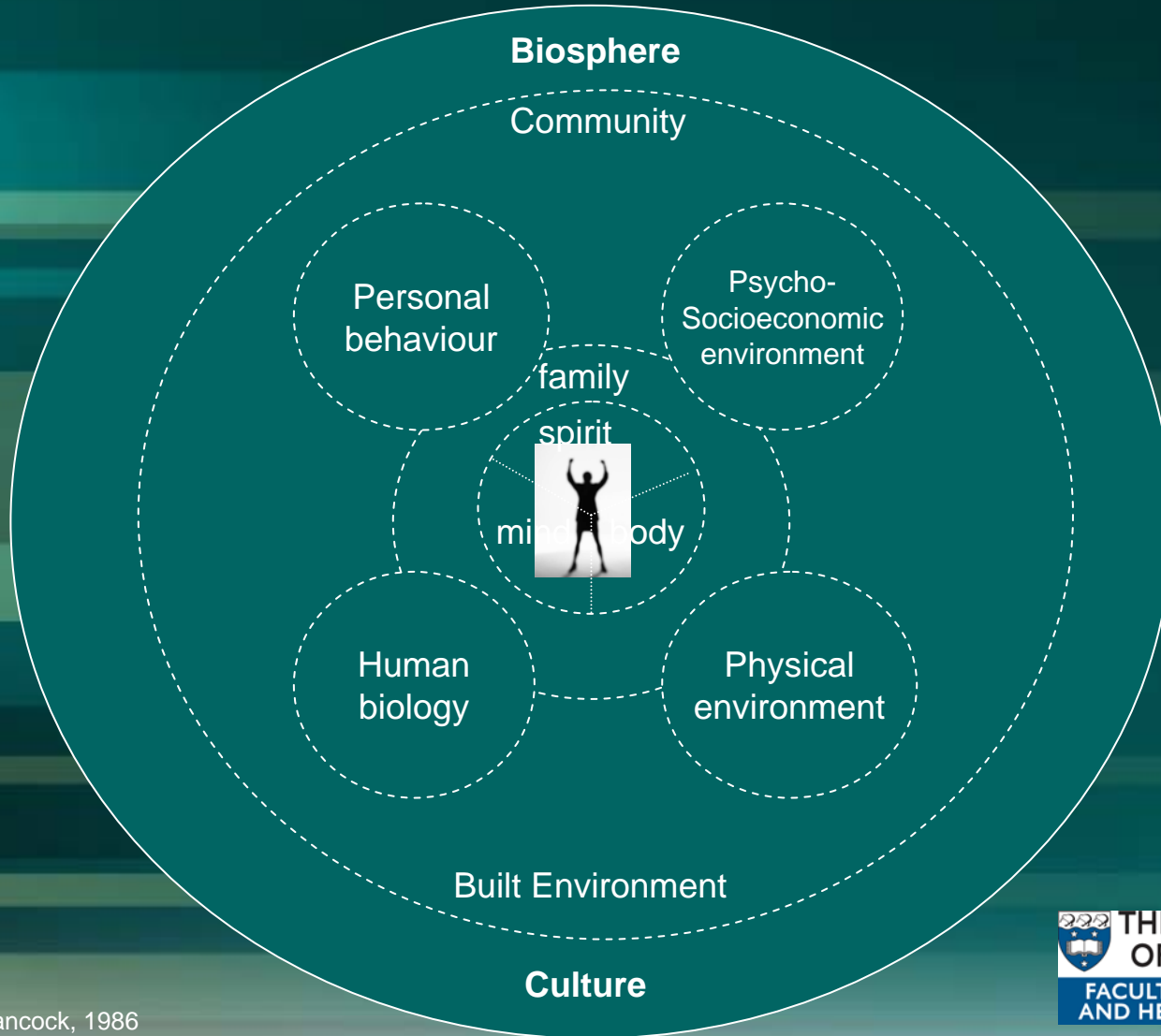
**FACULTY OF MEDICAL
AND HEALTH SCIENCES**



Evaluating the health impact

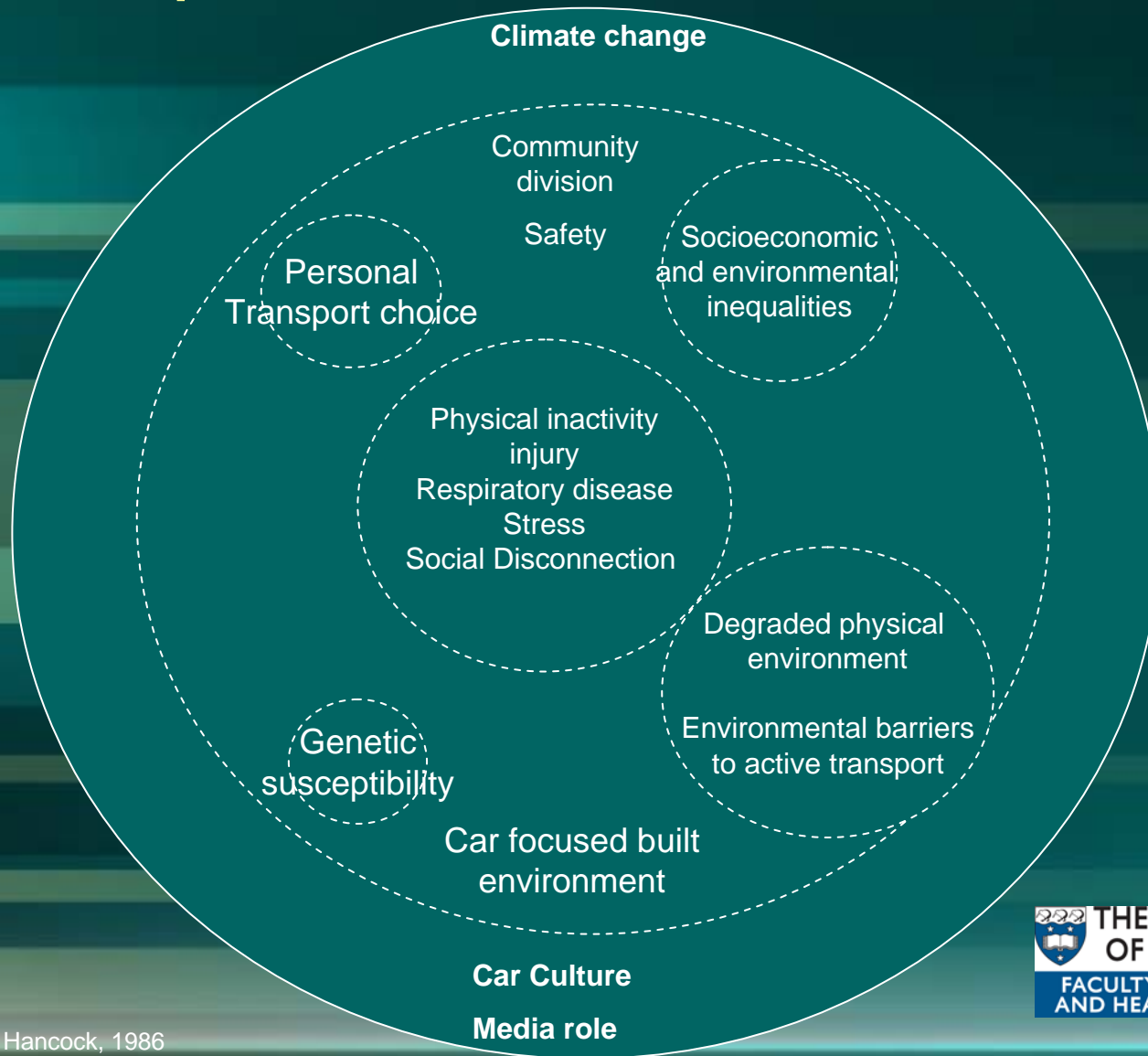
- Fractionation of evidence
- Linear process of research to policy to action
- Within discipline questions lead to within discipline answers
- Lack of community voice, ownership and energy for change

Integrating the evidence



Adapted from T. Hancock, 1986

Transport

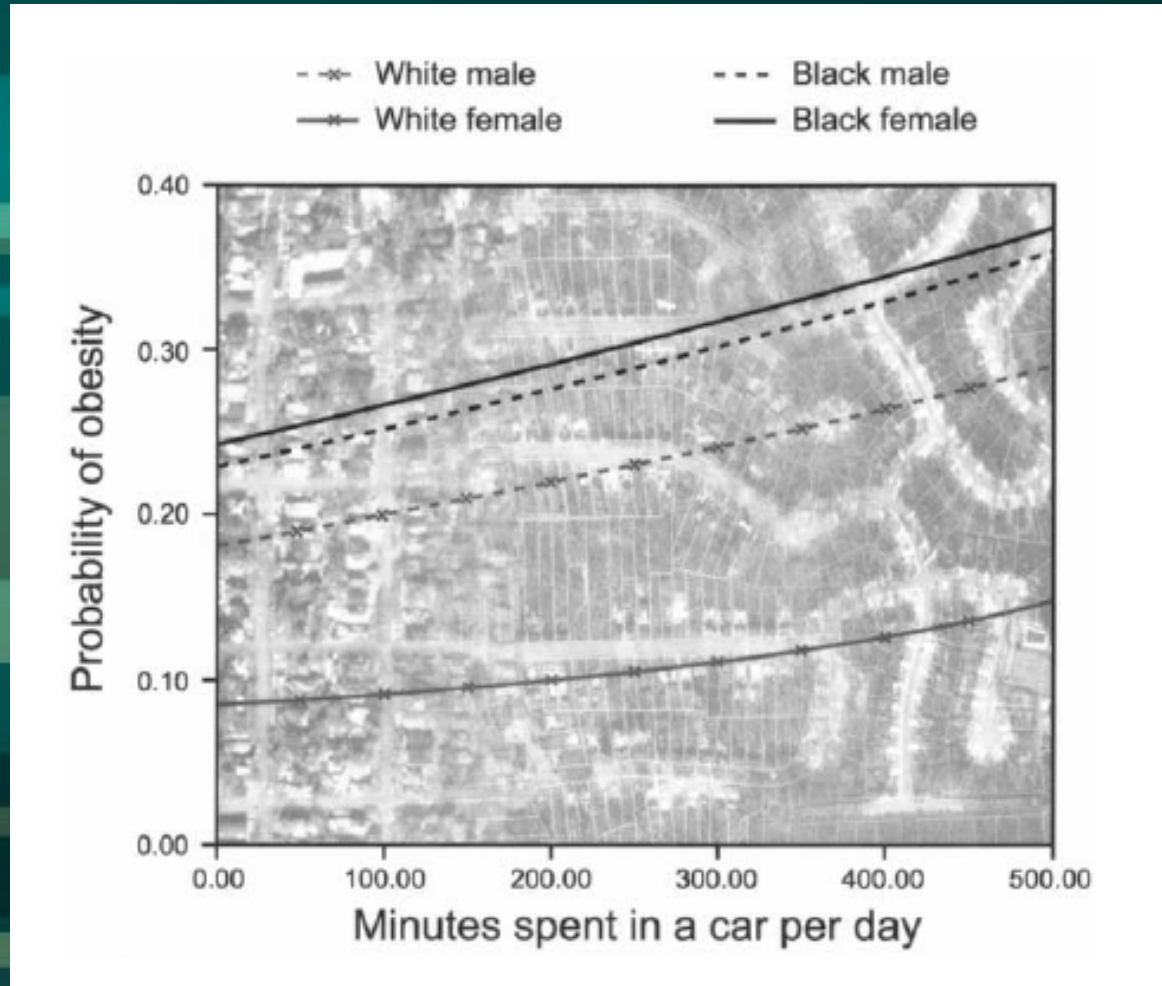


Adapted from T. Hancock, 1986

Relationship Models

- Most useful urban development research is at the interface
 - Local government/academic public health
 - Community/academic public health
- Two examples...

Obesity and cars



Frank et al, 2004

Walkability and likelihood of physical activity

<i>Walkability</i>	<i>Odds of meeting recommended PA level</i>
Low	1.00
Medium	1.50
High	2.13

Giles-Corti & Donovan 2003

What has been achieved?

- Health impacts of residential intensification
 - (Mark Lyne)
- Health Indicators for School Travel Plans
 - (Jamie Hosking/Shanthi Ameratunga)
- Modelling health and the trip to work
 - (Alex Macmillan/Alistair Woodward)
- Factors affecting walkability in an Auckland community
 - (Bing Lee/David Thomas)

- EnHealth
 - Forum for sharing research
 - Identification of research gaps
 - Development of collaborative projects

What is the potential?

- Scientific knowledge
 - Responding to research gaps
 - Systematic review
 - community participation
 - Strategic input into policy development
 - Evaluation of policy implementation
- Partnerships
 - Sustainability at the University (START)
 - ARPHS
 - Community

What is necessary?

- Good will
- A common agenda
 - Shared forum
 - Collaborative funding models
 - Specific programme of research
- Adequate human resources
 - Time
 - Intellectual skills
 - Contextual knowledge
- Strong community links

